

getting started

introduction

Thank you for purchasing Stallion's ePipe ServerWare Internet firewall and VPN concentrator.

To get your ePipe ServerWare up and running quickly, follow the steps below. To understand how you can use ePipe ServerWare, read the included documentation. This documentation is also available on the separate Stallion Software and User Documentation CD ROM as well as the Stallion Technologies website at www.stallion.com.

step 1 before you start

step 2 what else do you need

step 3 installing ePipe ServerWare

step 4 connecting the hardware

step 5 configuration

hardware requirements

troubleshooting

product registration

step 1 - before you start

It is recommended you have a solid understanding of both computer hardware and networking to install and use ePipe ServerWare. If you do not feel comfortable with tasks and concepts such as installing a new network card, IP addresses, or Ethernet networks, it may be necessary to seek assistance from another source in these areas before attempting to configure ePipe ServerWare.

Please consider the following before installing ePipe ServerWare:

- ePipe ServerWare is a software product that needs to be installed on a standard Intel computer.
- Ensure the computer onto which you are going to install ePipe ServerWare has the necessary hardware installed. Also ensure that this hardware is compatible with ePipe ServerWare, as detailed in the 'hardware requirements' section of this 'getting started' guide.
- **Make sure the computer's hard disk contains nothing you need, as it will be re-formatted during installation.**
- Ensure that this computer meets the minimum requirements for ePipe ServerWare, as detailed in the 'hardware requirements' section of this 'getting started' guide, and that any extra features required have the hardware needed (e.g. Stallion multiport serial adapter for analog modems or ISDN Terminal Adapters).

step 2 - what else do you need?

- Another PC available to configure the ePipe. This PC must have an Ethernet network interface configured on a TCP/IP network, and a Javascript-enabled Web browser.
- Communications devices such as analog modems, ISDN Terminal Adapters or ADSL modems to provide WAN or Internet connectivity to the ePipe.
- Appropriate cables and accessories to connect your network and communications equipment to the computer running ePipe ServerWare.

step 3 - installing ePipe ServerWare

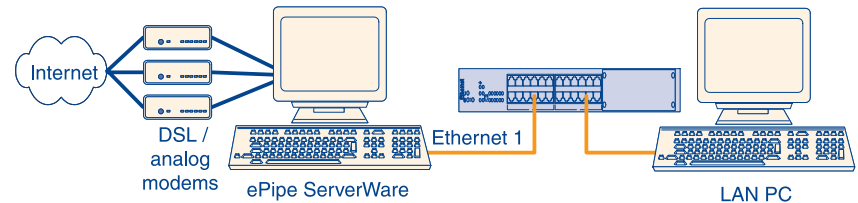
- Place the CD-ROM that came inside this jacket into the computer's CD-ROM drive, and ensure that the computer is set to boot from the CD-ROM drive before booting from the hard disk. This is commonly set in the system's BIOS setup. Consult your computer documentation for more information.
- Start the computer. The computer will boot from the CD ROM drive and initiate the installation process.
- Follow the onscreen instructions during the installation process.

Warning: ePipe ServerWare WILL remove all data from the computer's hard disk.

- After installation, you will be prompted to press the enter key to start ePipe ServerWare.
- When ePipe ServerWare starts, it will attempt to obtain an IP address automatically (via BOOTP or DHCP). Press enter several times to enter the IP address manually. This will be the IP address of Ethernet 1 for the Local Area Network.
- You will then be asked to enter the IP subnet mask.
- The message "ePipe ServerWare is now ready" will be displayed. ePipe ServerWare is now available for configuration. Remove the CD from the CD ROM drive.

step 4 - connecting the hardware

The network interface selected by the installation process as Ethernet 1 is the interface commonly used for configuring ePipe ServerWare. The computer that is running ePipe ServerWare must be connected to an Ethernet network. The computer that is to be used to configure ePipe ServerWare must also be connected to the same Ethernet network. This can be done by connecting the systems to a hub or switch with a straight-through Ethernet cable, or by connecting the ePipe ServerWare computer directly to another computer with a cross-over cable (see diagram below).



step 5 - configuration

To start the configuration phase using the ePipe ServerWare Management Assistant, follow the steps below. The PC will need to be running Windows (95, 98, ME, NT, or 2000) and have TCP/IP network drivers installed and operational. To start the configuration, do the following:

1. Start a Web browser on a PC on the same network as Ethernet1 on the ePipe ServerWare PC.
2. Browse to the IP address given to the ePipe ServerWare PC during installation. This will bring up the ePipe ServerWare management assistant screen.
3. You will be asked to enter and confirm the root password for ePipe ServerWare. This password will be required to make changes to the configuration.
4. Click on the 'setup' item in the menu bar at the top of the screen. You will be taken to the screen where you can configure ePipe ServerWare features.

hardware requirements

ePipe ServerWare has the following minimum hardware requirements:

Product	CPU	Memory	Disk
Remote / Protect	200MHz Pentium II	32MB	1.2GB
Concentrator 10	400MHz Pentium III	64MB	1.2GB
Concentrator 50	700MHz Pentium III	64MB	1.2GB
Concentrator 150	700MHz Pentium III	128MB	1.2GB
Concentrator 500	700MHz Pentium III	256MB	1.2GB

- Bootable CD ROM drive
- PCI Ethernet 10/100 NICs and quad cards (max. 8 segments*)

ePipe ServerWare can connect to the Internet over the following interfaces:

- A single leased line or broadband router, using an Ethernet card
- Up to 7 ADSL modems (PPPoE), using multiple Ethernet interfaces
- Up to 8 ISDN terminal adapters, using a multiport serial card
- Up to 8 analog modems, using a multiport serial card

Supported Ethernet card chipsets include:

- EtherExpress Pro/100
- PCI NE2000
- AMD PCnet32
- RealTek 8129/8139
- SiS 900/7016
- TI ThunderLAN
- DECchip Tulip
- VIA Rhine

See the ePipe ServerWare product documentation for a list of supported Ethernet cards. Stallion EasyIO and EasyConnection are the only multiport serial cards supported by ePipe ServerWare (supporting up to 8 serial ports).

* ePipe ServerWare Protect and Remote support a maximum of 2 Ethernet segments

troubleshooting

If you experience any difficulty with ePipe ServerWare, you may want to recheck previous steps in this 'getting started' guide to ensure correct installation. Consult the ePipe ServerWare documentation for more information (see below). If you are still encountering difficulties, you may email Stallion's Technical Support team. Registered customers may also telephone Stallion's Technical Support team. See the product registration section of this 'getting started' guide for product registration details.

Current Documentation and Software

Product documentation in electronic format for ePipe ServerWare (as well as other Stallion products) is included on the Stallion Software & User Documentation CD-ROM that is shipped with ePipe ServerWare. Printed product documentation is also shipped with ePipe ServerWare (Concentrator only).

Check Stallion's web site at <http://www.stallion.com/html/userdoc/epipe/> for documentation updates. ePipe ServerWare software updates are available to registered customers only. See the product registration section of this 'getting started' guide for product registration details.

product registration

ePipe ServerWare Concentrator includes 12 months free telephone technical support for registered users only. To register, complete the on-line registration available from the Stallion web site at <http://www.stallion.com/html/register/> or by mailing the completed ePipe ServerWare registration form to the nearest Stallion office (see below) within 30 days of purchase. Registered customers will also receive free software updates. No telephone support or software updates will be available until the product is registered with Stallion Technologies. Unregistered users may access our technical support team by email only.

Extended technical support for ePipe ServerWare Concentrator is also available to registered users. Contact your reseller for details.

ePipe ServerWare Remote includes 30 days free telephone technical support for registered users only. Extended support is only available for ePipe ServerWare Protect and Remote through the purchase of other ePipe products. Otherwise, support outside the 30 day period is available on a per-incident basis only. ePipe ServerWare Protect includes 30 days free email technical support only.

Corporate Addresses

Asia/Pacific

Stallion Technologies Pty Ltd

33 Woodstock Road

Toowong QLD 4066

AUSTRALIA

Tel: +61 7 3270 4242

Tel: +61 7 3270 4243 (support)

Fax: +61 7 3270 4245

Email: support@stallion.oz.au

Web: www.stallion.com.au/html/support/

North America

Stallion Technologies, Inc.

2880 Research Park Drive, Suite 160

Soquel, CA 95073

USA

Tel: +1 831 477 0440

Tel: +1 800 729 2342 (support)

Fax: +1 831 477 0444

Email: support@stallion.com

Web: www.stallion.com/html/support/

Stallion, ePipe and EasyIO are registered trademarks of Stallion Technologies. ePipe ServerWare and EasyConnection are trademarks of Stallion Technologies. All other brands and product names are trademarks of their respective owners. Information contained herein is intended as a guide and is subject to change without notice. © 2001. All rights reserved. 05/01. 950114