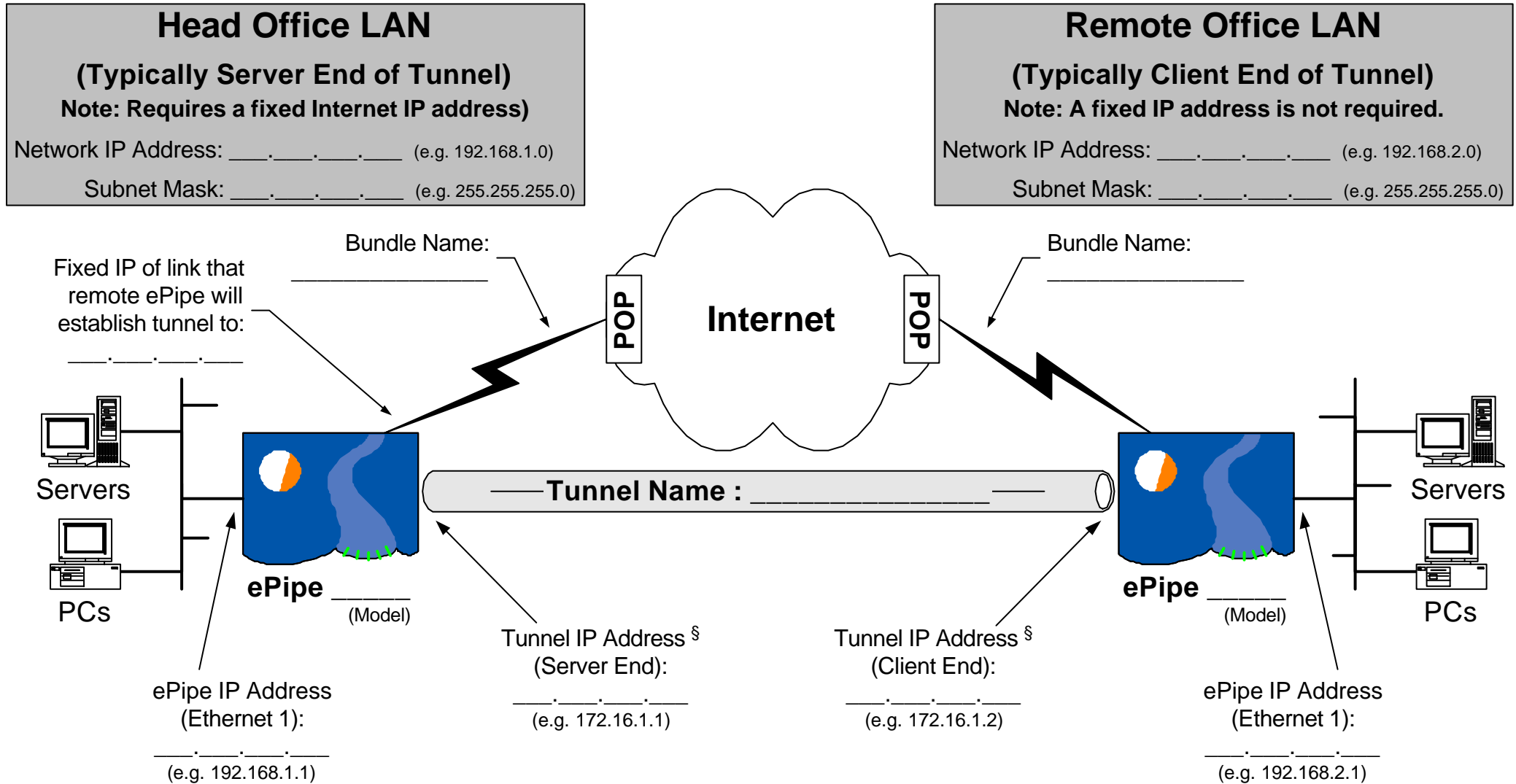




Site-to-Site VPN Network Design Template



NOTE: This design template should be used in conjunction with the Site-to-Site VPN Setup Worksheet and the ePipe User Documentation. Please refer to the Stallion Technologies web site (www.stallion.com) for more information.

§ The end points of the tunnel need to be allocated unique IP addresses for routing purposes. These IP addresses should be allocated from a subnet not already in use in your WAN.